



PETA-LEE

PETA-LEE specialises in creating fashion and interior felt items ranging from scarves and hats, to an extensive range of soft furnishings limited only by imagination. Bespoke throws, cushions, lampshades, vases and a variety of other interior accessories have been crafted in the studio. Using combinations of texture, colour and materials, each PETA-LEE product has the mark of individuality and quality. To enhance these creations further, Peta-Lee has innovated the blending of 70% mohair blends into her felts to add drama, softness and luxury.

Living in Johannesburg, founder and designer Peta-Lee Woolf wanted to produce local products that also had the opportunity to provide employment and empowerment to the previously disadvantaged. PETA-LEE trains, guides and works with local felters who have either learnt their basic skills via



community workshops, or have been taught by PETA-LEE from scratch. As the demand for original and uniquely South African products has grown both nationally and internationally, so too have the communities that display such extraordinary skills have been able to develop and uplift the quality of their lives. The company sees it as a privilege to be a part of this process.

Front: Punched Throw, 160 x 230 cm
Above: Knitted Flap Cushion, 50 x 50 cm
Left: Knitted Throw

PETA - LEE

SALES:

P O Box 46214 / Orange Grove 2119
Johannesburg / South Africa
+27 11 483 0214
peta-lee@wol.co.za
www.peta-lee.co.za

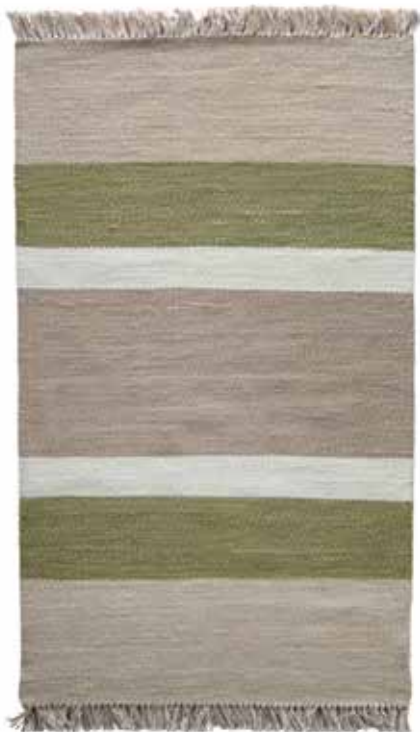




KAROO LOOMS

The Prince Albert weavery has been supplying handwoven mohair rugs and carpets to the international trade and public market since 1983. Offering a range from traditional to contemporary designs, the weavery works closely with its clients in supplying top quality mohair rugs that add aesthetic value to homes and businesses alike – offering an exclusive range as well as the service of custom designing individual mohair rugs to meet a client's or other brand's vision.

In October 2010, the weavery was bought by John Southern, who has an extensive history in business and textiles. His idea was to keep the weavery alive and offer it a fresh new start under the name Karoo Looms. Having crossed paths with Sophia Booley earlier that year, the weavery was



set to begin its new journey. With a passion for quality, design, craftsmanship and service, Sophia now manages and runs the business: building on strong foundations and creating further opportunities for growth.

Front: Stripes (KL 1001) 80 x 130 cm
Above: Indaba (KL 1009) 90 x 160 cm
Left: Overstripe (KL 1015) 90 x 160 cm



SALES:

55 Church Street
Prince Albert 6930 / South Africa
+27 23 541 1363
info@karooweavery.co.za
www.karooweavery.co.za





Beautiful Story Collection: African Bright Stripe Design 130x180 cm

HINTERVELD

Hinterveld is a dedicated weaver of mohair throws and blankets. With an exceptionally beautiful range of stock, and a proven capability to manufacture specific orders to its client's individual requirements, Hinterveld aims to develop long-term relationships with a growing customer base, which shares its enthusiasm for this remarkable natural product.

Angora goats thrive in the Karoo region of South Africa, where the combination of hot, dry summers, cold winters and semi-desert vegetation give mohair the added beauty of being a renewable and sustainable natural resource. Hinterveld's beautiful crafted and timeless mohair products are made in South Africa.



As part of the Stucken Group, an international leader in mohair buying, trading and processing, Hinterveld has access to the vast wealth of experience acquired by the Stucken Group's commitment to mohair in South Africa since 1951.

Above: Willowmore Collection: Herringbone Weave (grey) 130 x 180 cm

Below from top to bottom: Beautiful Story Collection: Once Upon A Time; Goodnight Grey; Velvet Soil; Forever & Ever; Cape Dutch; Happily Ever After 130 x 180 cm

 **Hinterveld**
Luxurious. Timeless. Mohair



SALES:

Hendrick van Eck Drive, Riverside Industria
Uitenhage 6229 / South Africa
+27 41 992 4880

Daniel Stucken: danie@hinterveld.com
www.hinterveld.com





ALTAI

Altai is Milan's premier carpet gallery, selling a range of fine handmade rugs, including Filikli mohair rugs.

According to some anthropological studies, the mohair carpets made by indigenous Anatolian and Kurdish tribes are among the most primitive knotted weaves. Mohair fleece – with its exceptional thermal properties – is knotted onto a hand-woven cloth, to create silky soft carpet-bedding useful to nomads during their summer migrations to high pastures. A millennial artform, Filikli designs are based on ancient geometric symbols of protection. Placed on the floor, or hung on the wall, these rugs with their characteristically brilliant colours give a powerful three-dimensional effect. Altai owns one of the most important collections of antique Filikli rugs in the



Front: Karapinar/Anatolia, early 20th Century (FILO 217) 216x116 cm - Above: Anatolia, recent creation (NPF 0015) 285x225 cm - Left: Karapinar/Anatolia, early 20th Century (FILO 167) 195x130 cm



world, pieces that, when hung, become extraordinary works of art. In the 1990s, Altai also set up a workshop in Kurdistan to create new rugs created using age-old traditional techniques, and thus keeping nomadic traditions alive. These reinterpreted pieces are available in the natural colours of the Anatolian landscape, or in the vibrant colours characteristic of nomadic Filikli.

based on a text by Ros Weaver, Cover Magazine

A L T A I



SALES:

6 via Pinamonte da Vimercate, Milano
+39 02 29062472

info@altai.it

www.altai.it





MUNGO

Mungo was founded in 1998 by master weaver Stuart Holding, based in the seaside town of Plettenberg Bay, South Africa and housed in the historical homestead of Old Nick Village. Here Mungo's sampling and fabrics are woven on antique 19th century Hattersley looms. Other fabrics are manufactured in a boutique weavery close by which also employs and empowers the local community. Mungo is a unique textile company with the rare ability to create quality fabrics from the inception of design to the final product. This ensures all our products are from an ethical and quality beginning.



The word “mungo” is an old textile term rooted in the Latin: *Inutile Ex Arte* and can be interpreted as “useless things by an art made useful”. Mungo produces a range of throws, blankets, table linens, towels and fashion accessories, including throws and scarves in mohair blends.

*Front & Above: Flower Weave Blanket
Below Left: Womo Scarf
These items are custom made to order*

MUNGO



SALES:

+27 82 821 5692

woven@mungo.co.za

www.mungo.co.za





ELSA BARNARD

Since 1975, Elsa Barnard has been designing mohair carpets that are woven in Dimbaza in the Eastern Cape of South Africa. The tradition of weaving excellence is being honoured by a dedicated staff, many of whom have been with the enterprise since its inception.

Barnard's mohair carpets are manufactured by women who spin, dye and weave the carpets on large-scale looms, paying particular attention to the detailed weaving and finishes of the final product. All designs can be woven to clients' specific tastes and dimensions.



SALES:

P.O. Box 466
Kenton On Sea 6191 / South Africa
+27 46 648 2687

ebarnard@pemail.co.za
www.mohaircarpets.co.za





CORAL STEPHENS

Coral Stephens Handweaving specialises in decor fabrics and rugs woven in mohair, but also in silk, wool, cotton and raffia. These textiles are used extensively in home, corporate and hotel spaces. Mohair curtaining has been hand spun and woven for over sixty years by the company – founded in 1949 in Piggs Peak, Swaziland, this small studio continues to produce bespoke fabrics and carpets of sophisticated quality, with a commitment to handmade tradition and unique design.

Coral Stephens undertakes commissions and is able to work closely with international decorators to achieve customised colours, textures and patterns. Each item is made to its customers' size and colour requirements, with an extensive archive of shades, patterns and combinations available to revert back to or inspire completely new designs.



Front: (top to bottom, each 100% mohair) shawl with fringe; throw with looped detail; throw with ribbed detail - all available in 130x200/170x250 cm / or made to order - Above: 100% mohair curtaining (pictured in lime) - dyed & made to order (maximum width 180 cm) - Left: 100% mohair curtaining in teal, chocolate and amber stripe - made to order (maximum width 180 cm)



SALES:
Peak Craft Centre
Piggs Peak
Swaziland
+268 2431 3340

murrae@coralstephens.com
www.coralstephens.com

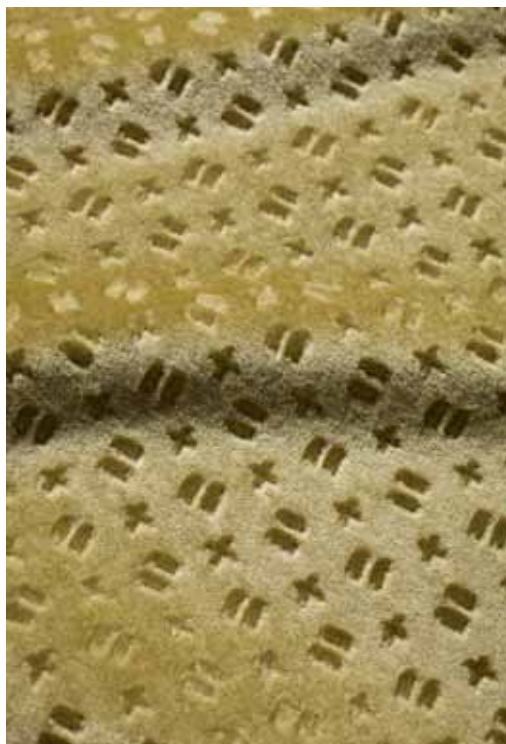




SCHELLENS

At Schellens, there's no end to the possibilities for creating exclusive and original fabrics. The company's distinctive range of textiles demonstrates the potential of the mill yet represents only a fraction of its capabilities. Schellens thus continues to develop new fabrics independently, as a source of inspiration for its clients, and in partnership with them. As the only European mill that dyes and weaves mohair velvets under one roof, Schellens' velvets are unique and remarkable – the natural silky sheen of this regal fibre makes them a favoured choice for upholstery in luxury homes, private aircraft, touring buses, passenger vehicles, yachts and cruise ships.

Schellens approaches the market for natural fibre weaves with insight and ingenuity. In 2012, it has invited Lidewij Edelkoort to revive a production process called Gaufrage,



embossing its velvets with a hot cylinder walses in a range of ten motifs. Edelkoort has delved into an extensive archive of these copper cylinders – some dating back to the 1920s – all salvaged by Schellens from a Dutch factory just before it was about to be discarded. These contemporary and appealing patterns have been re-released by Schellens and used to upholster furniture by the renowned Parisian retailer Caravane.

*Front: Flamingo 7008.36 / Above: Marking 7008.23
Left: Strata 7008.06*

SCHELLENS



SALES:

St Jozefstraat 20
5753 AV Deurne / The Netherlands
+31 493 315 833

r.raaijmakers@vescom.com

www.leoschellens.com





Cable Throw

ADÈLE'S MOHAIR

Adèle's Mohair is a craft and design studio, producing home accessories and textiles, as well as mohair knitting yarns. Adèle Cutten started the business in 1983 and continues to run it adhering to fair trade and green standards. The natural fibres of mohair and Merino wool are locally sourced and of the finest quality.

Adèle's Mohair items are both fashionable and functional, available in colours to suit all tastes. The trims on all the throws are custom made to order. The styles are available in both brushed and bouclé mohair, and in regular or medium weights. The company's workshop is located in the countryside between the port cities of East London and Port Elizabeth in South Africa.



SALES:

PO Box 21

South Seas 6172 / South Africa

+27 46 675 1090

info@adelesmohair.co.za

www.adelesmohair.co.za





HERITAGE-WEAVERS

Heritage-Weavers was born out of a love for Mohair fibre and wanting to share it with all corners of the globe. The company designs and distributes mohair throws, blankets, scarves and cushions online, and through independent retailers around the world. The collection is strategically stocked with distributors and serviced from the company mill in the Eastern Cape, South Africa.

Heritage-Weavers' stock supported service is ideally suited to smaller retailers and independent boutiques. All throws, blankets, cushions and scarves are hand-finished giving each item a personal touch. Bespoke designs may also be developed by the company's in-house designer. Heritage-Weavers' new 2013 Collection has just been launched and available online.



Front: Country House
Above: Animal Check
Left: Beach House

All items pictured are from the Serene Collection
(70% mohair / 25% wool / 5% Nylon) available in
knee, throw and king size

Heritage-Weavers
South Africa

SALES:

5 Fairford Street, Mill Park
Port Elizabeth 6001
South Africa
+27 41 37 32 301

david@heritage-weavers.com
www.heritage-weavers.com





MOONBASKET

Moonbasket has evolved quickly beyond the contemporary round shapes, natural colours and textures that established it on the Cape Town design scene in 2009. A fresh look at stitching has moved into exciting new areas: spherical lampshades in unbleached cotton or jute are joined by pumpkin lights in tangerine or electric blue. Delicate and decorative bowls have grown from the round shapes, and some have even fallen to the floor in the form of repeated circular motifs, joined together to form the most intriguing carpets. Whenever possible, Moonbasket employs materials which are natural, local, or both; this includes the use of South African mohair and interesting mohair blends for rugs, throws and accessories.

Moonbasket was started by Dani Le Roy and Laura Summs. The design studio endeavours to have as much fun as possible while



Front: Mardi Gras Carpet

Above: Motif Carpet

Left: Crochet Bowls (Urchin, Peacock & Spiral)



delving deeply into the myriad possibilities of crochet. Moonbasket supports women from a community-based project on the outskirts of Cape Town. The women continue to give their crochet skills to their ideas, as the designers constantly reach for fresh ways to showcase the beauty and value of crochet in a contemporary context. The unique quality of each handmade item becomes the most essential part of its luxury.

moonbasket

SALES:

1st floor Flex Mor House
240 Albert Road, Woodstock
Cape Town 7925 / South Africa
+27 82 929 4021





BABYMO & CAPE TWEED

Momentos of South Africa has been involved in the development of mohair products for over 20 years, producing ranges using both kid mohair and adult mohair. Under the brand of BabyMo, fine throws, blankets and fashion accessories are designed in 100% kid mohair and silk-mohair blends.

Momentos' newest development is Cape Tweed, a traditional range of twills in a virtually unlimited set of colour combinations. The brand's tweeds are hand-woven (or hand-loomed) from 100% mohair, made in the Cape region and distributed internationally.



Front & Above: BabyMo Ecrú Throw (80% natural & coal) 115 x 180 cm
(78% kid mohair / 13% wool / 9% nylon) - Left: Cape Tweed (100% adult mohair)



SALES:
P.O. Box 13608
Humewood 6013 / South Africa
+ 27 41 507 7270
momentos@momentos.co.za
www.babymo.co.za
www.capetweed.co.za





COWGIRLBLUES

cowgirlblues is a Cape Town-based business, designing and making fine crafted knitwear from top quality, natural and local fibres. Its range features clothing, accessories and décor items, including 100% mohair rugs, cushions, lace curtains, crochet lampshades, and mohair-blend seat covers and throws. Individuality is guaranteed through a focus on handcrafting techniques, and all-products are custom coloured in-house.



Front & Left: Todd handknit mohair bench rug 60 x 60 cm (or made to order)
Above: Peta crochet floor rug, made to order in handspun wool or mohair

cowgirlblues



SALES:

bridget@cowgirlblues.co.za

www.cowgirlblues.co.za

+27 83 4451150





SALLY ARNOLD®

Sally Arnold® is a design studio based in the Western Cape of South Africa, specialising in mohair home products. All designs are professionally hand-crafted for the discerning, quality and environmentally conscious market. Arnold uses strong and bold graphics, believing that good design is based upon a series of symbolic visual vocabularies. The more elementary a sign, the stronger its visual impact, fuelled by the energy and power of colour. Her collection translates the artist's rich training and international experience into a highly crafted, timeless product that is clearly South African, yet international.

Arnold uses ecologically-friendly processes and natural fibres: namely mohair. She produces hand-woven mohair floor cushions,



flatweave reversible rugs and upholstered ottomans. The silky skeins, hand spun and dyed, then sun dried by Karoo Looms, are woven by local women on hand-operated looms.

Geometric floor cushions (front: SA09 MC7 - White Arc on Blue & SA09 MC6 - Grey Compass on Neutral) (above: SA09 MC5 - Apricot Hooks on Avocado & SA09 MC3 - Apricot Compass on Sky) 75 x 75 x 15 cm

Left: Geometric flatweave reversible rug (SA 07 MFC 2 - Sand) 170 x 240 / 200 x 250 / 250 x 300 / 250 x 400 cm



Sally Arnold®

SALES:
15A Nuwe Straat/Prince Albert 6930/South Africa
+27 82 710 5909
info@sallyarnold.com
www.sallyarnold.com

